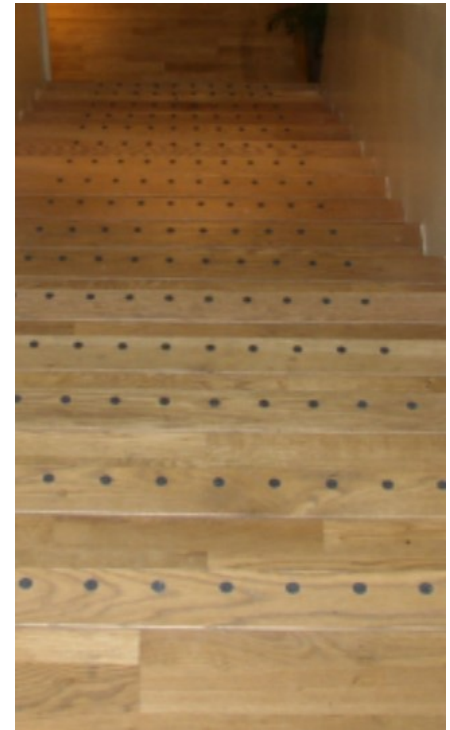
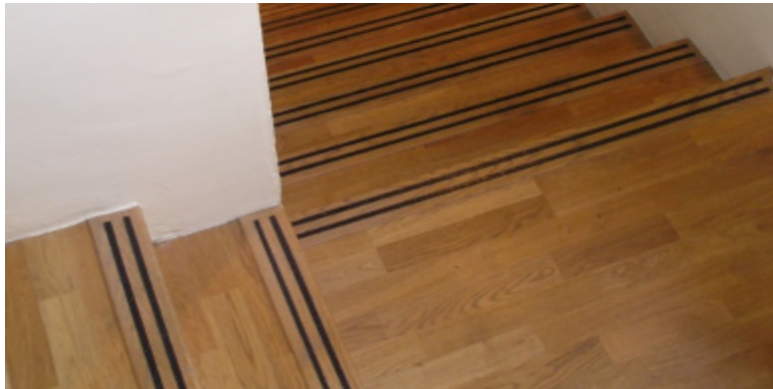




K-Grip—Timber



K-Grip was initially developed to provide anti-slip on stone and marble, but it can be used successfully on most exterior and interior hard surfaces to include timber, metal, glass and most vinyl's.

K-Grip is applied direct to decks and flooring as a paste and smoothed to a flat finish between two parallel lengths of 1 mm thickness K-Tape.

Using a heat gun accelerates the curing process

The result is a versatile, durable and flexible non-slip strip. K-Grip can be used on the vast majority of surfaces and is easy to repair by simply re-applying if a surface should become damaged.

K-Grip can be applied off or on site by Quadrigas specialist team.

K-Grip is ideal for creating anti-slip strips or discs and for creating bespoke shapes, including signage, company logos, directional arrows and is available in a range of standard, metallic and luminous colours to ensure DDA compliance.

Features;

- Applied finished product
- Can be applied without slot in surface
- Low shrinkage during hardening process
- Weather resistant bonding

Restoring A Past. . . Preserving A Future...

Survey Diagnosis & Proposals . Concrete Repair. Masonry Repair. Stone Restoration
Waterproofing . Bird Repellent Systems . Timber Restoration . General Refurbishment